

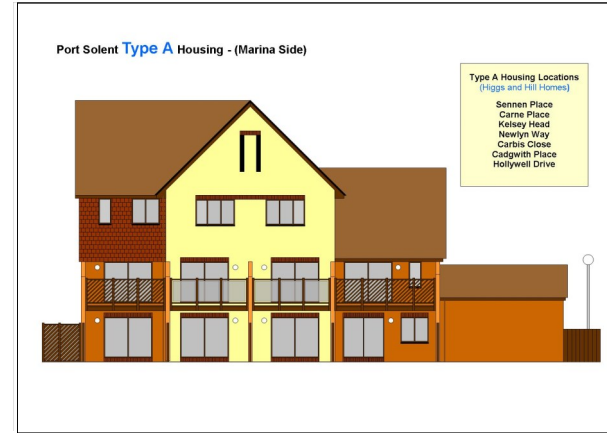
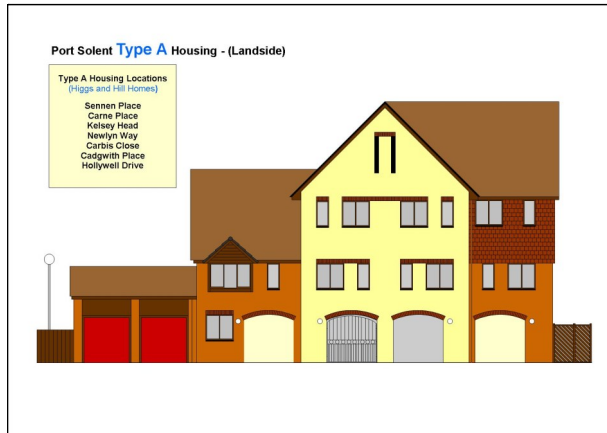
## Port Solent Balcony Balustrades

The following is a guide to Balcony Balustrades at Port Solent to show the standard designs as built by the original developers for each house type and also to show replacement Non-Like-for-Like designs generally approved by POSOL. To preserve the original design concept of Port Solent it is generally accepted to replace Balcony Balustrades with Like-for-Like Balcony Balustrades whenever possible. **Replacing Like-for-Like Balustrades with no changes will not require a drawing submission to POSOL.**

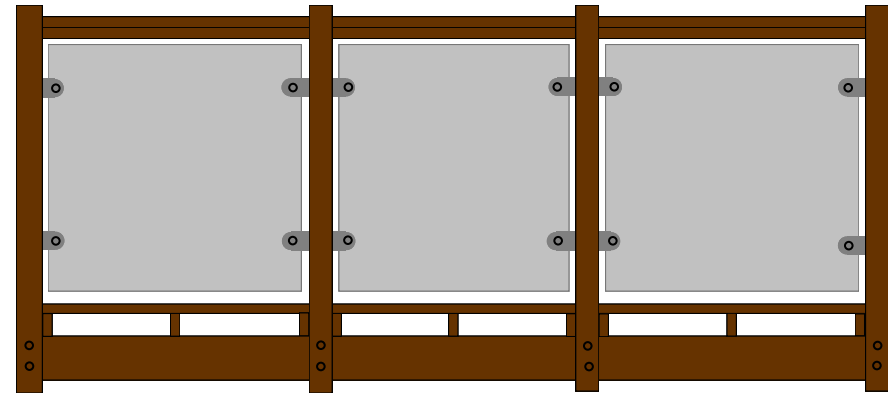
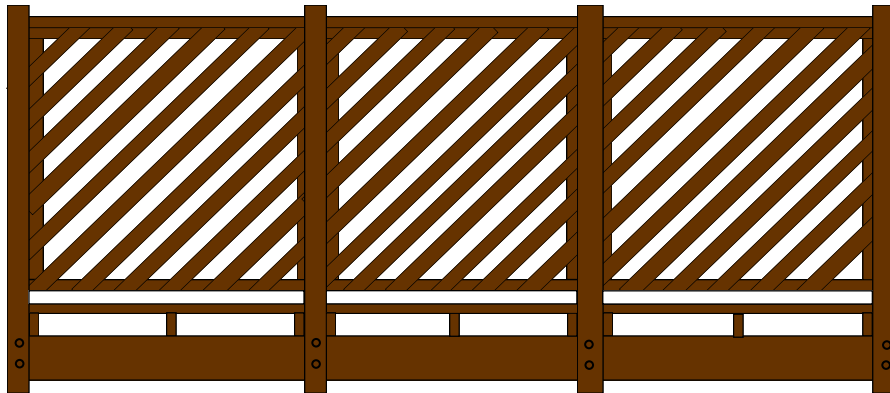
A popular change however has been to replace a Timber Slatted Balustrade with a Glass Balustrade. In such cases it is preferred that the standard glass design is followed. **Replacing with the standard glass design will not require a drawing submission to POSOL.**

**Other balcony balustrade designs may be acceptable to POSOL if they blend in with neighbouring properties. In such cases properly dimensioned fully detailed drawings must be submitted to POSOL for approval prior to any replacement work being carried out.**

For finished timber paint colours and glass panel colours please refer to the POSOL Paint Colour Guide shown on the POSOL website. ([www.posol.co.uk](http://www.posol.co.uk)).



## Standard Balcony Balustrading to Port Solent **Type A** Housing

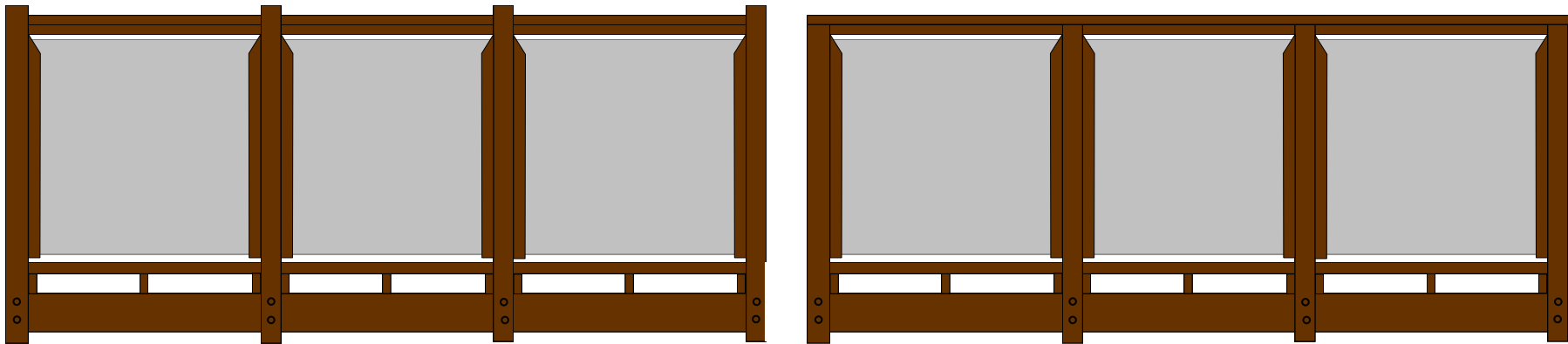


COVENANT INFORMATION

**All Joinery – Teak or ebony stain (Sadolin or similar)**

Note: **Sadolin** is not easy to find locally. Teak or ebony stains / paints from other manufacturers are acceptable.

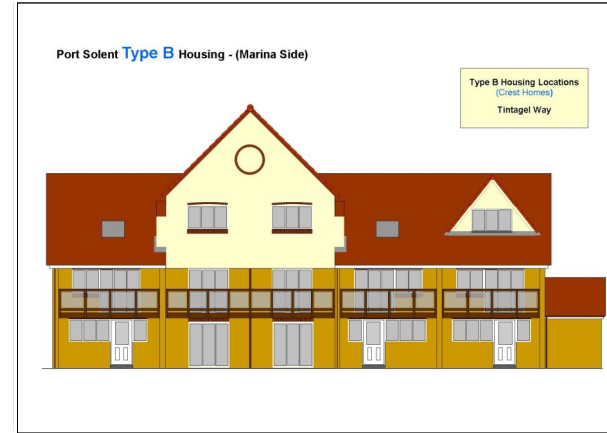
**POSOL Approved Non-Like-for-Like Balcony Balustrading to  
Port Solent **Type A** Housing**



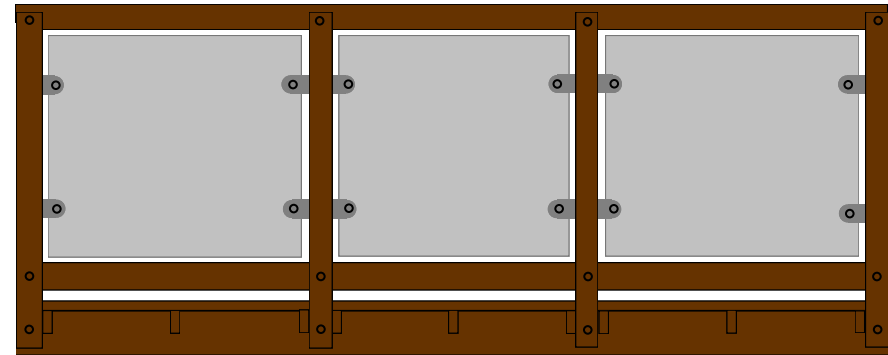
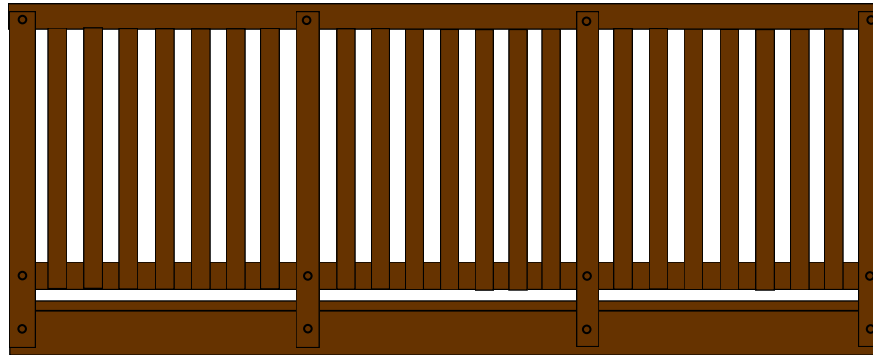
COVENANT INFORMATION

**All Joinery – Teak or ebony stain (Sadolin or similar)**

Note: **Sadolin** is not easy to find locally. Teak or ebony stains / paints from other manufacturers are acceptable.



## Standard Balcony Balustrading to Port Solent Type B Housing

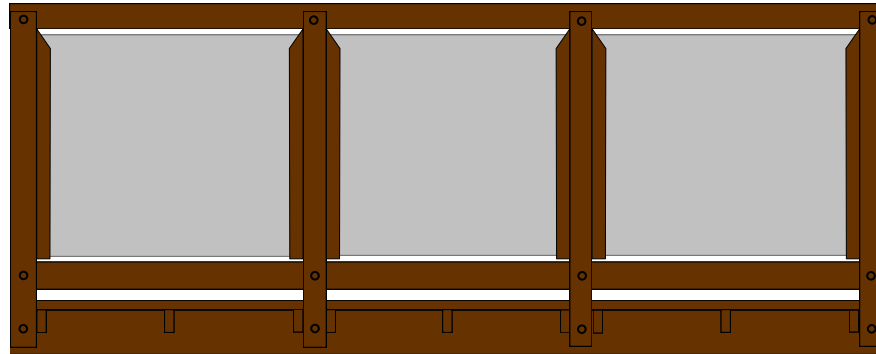


COVENANT INFORMATION

**Not to permit the exterior of the premises to be decorated otherwise than in the manner decorated by the Vendor**

Note: Existing balcony joinery on Type B Housing is generally teak or ebony (Dark brown or Black)

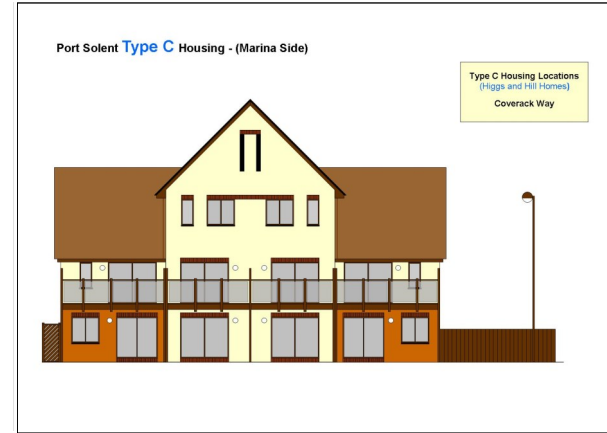
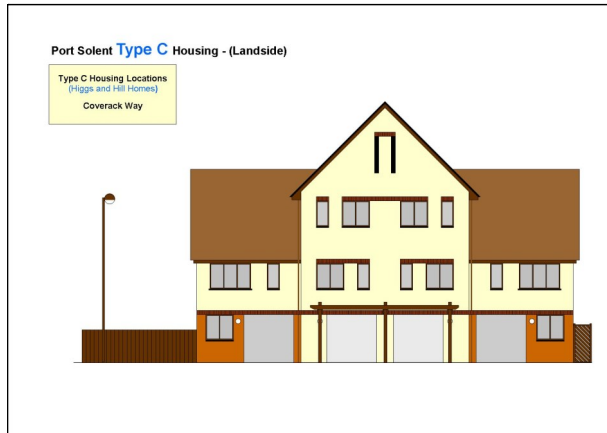
**POSOL Approved Non-Like-for-Like Balcony Balustrading to  
Port Solent **Type B** Housing**



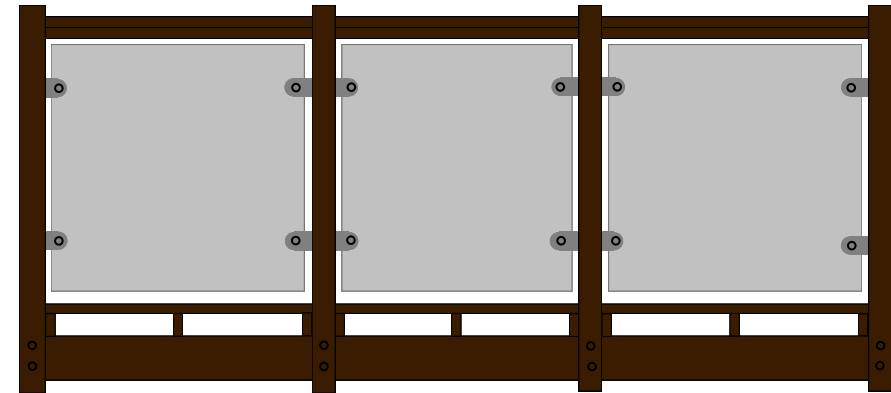
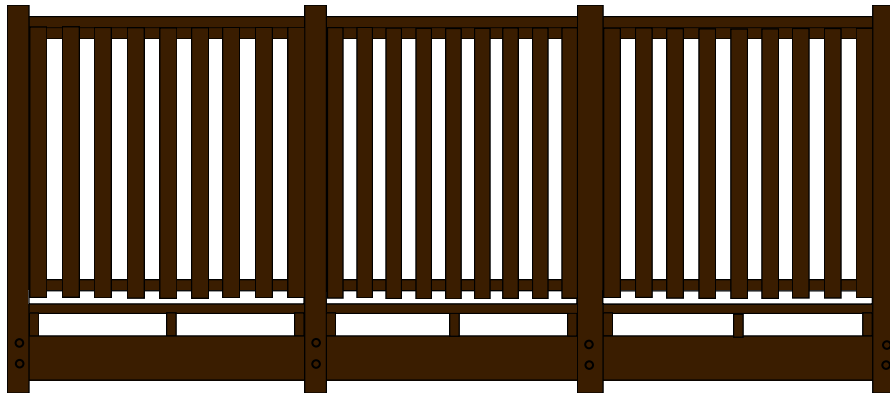
COVENANT INFORMATION

**Not to permit the exterior of the premises to be decorated  
otherwise than in the manner decorated by the Vendor**

Note: Existing balcony joinery on Type B Housing is generally teak or ebony (Dark brown or Black)



## Standard Balcony Balustrading to Port Solent Type C Housing

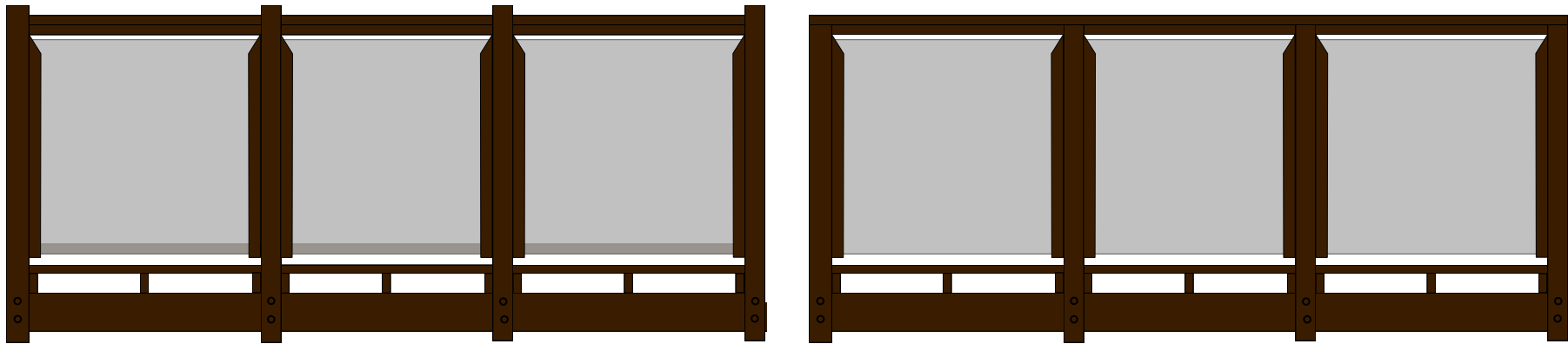


COVENANT INFORMATION

**All Joinery – Teak or ebony stain (Sadolin or similar)**

Note: **Sadolin** is not easy to find locally. Teak or ebony stains / paints from other manufacturers are acceptable.

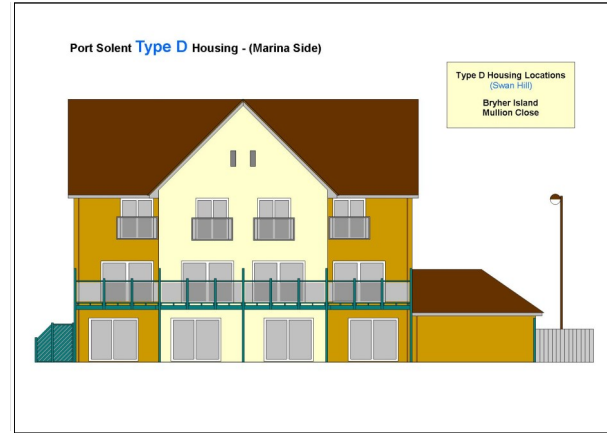
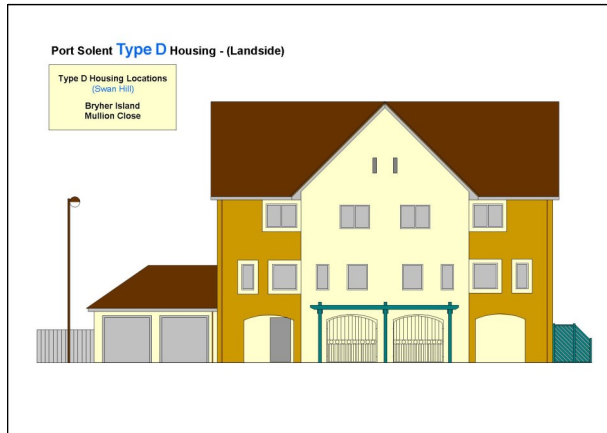
**POSOL Approved Non-Like-for-Like Balcony Balustrading to  
Port Solent Type C Housing**



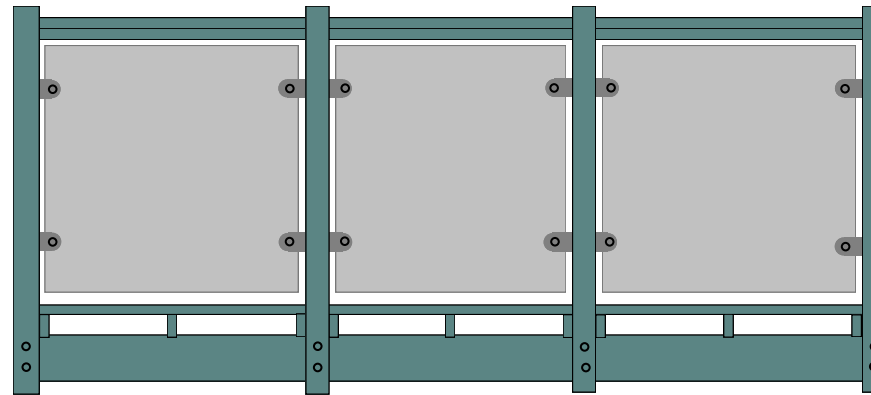
COVENANT INFORMATION

**All Joinery – Teak or ebony stain (Sadolin or similar)**

Note: **Sadolin** is not easy to find locally. Teak or ebony stains / paints from other manufacturers are acceptable.



## Standard Balcony Balustrading to Port Solent Type D Housing



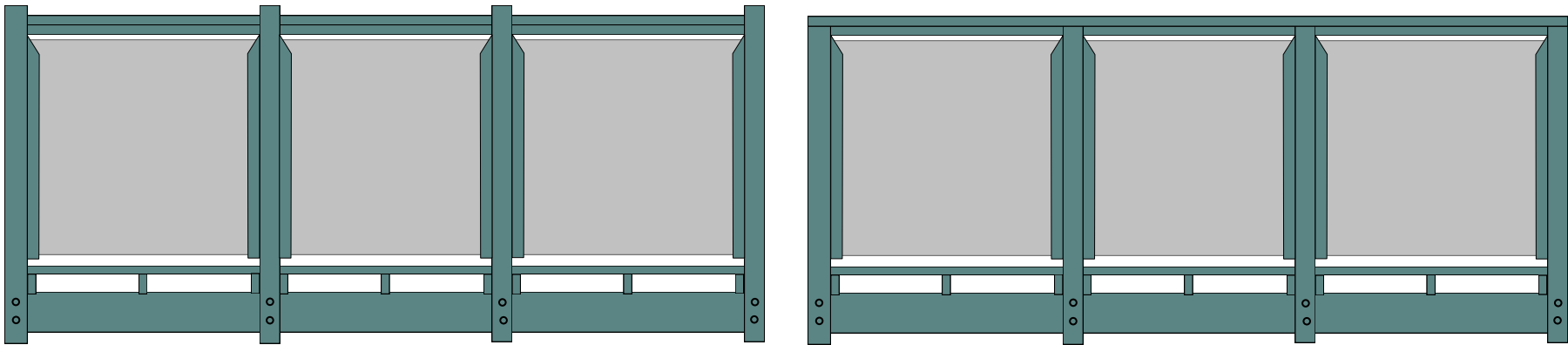
COVENANT INFORMATION

**All joinery – Sadolin Classic Grey Umber  
(fascia, soffits, balconies, pergolas)**

Note: **Sadolin** Classic Grey Umber not readily available. Recommend **Cuprinol** Heritage Shades All Weather Protection (**Wild Thyme**)



**POSOL Approved Non-Like-for-Like Balcony Balustrading to  
Port Solent Type D Housing**



COVENANT INFORMATION

**All joinery – Sadolin Classic Grey Umber  
(fascia, soffits, balconies, pergolas)**

Note: **Sadolin** Classic Grey Umber not readily available. Recommend **Cuprinol** Heritage Shades All Weather Protection (**Wild Thyme**)